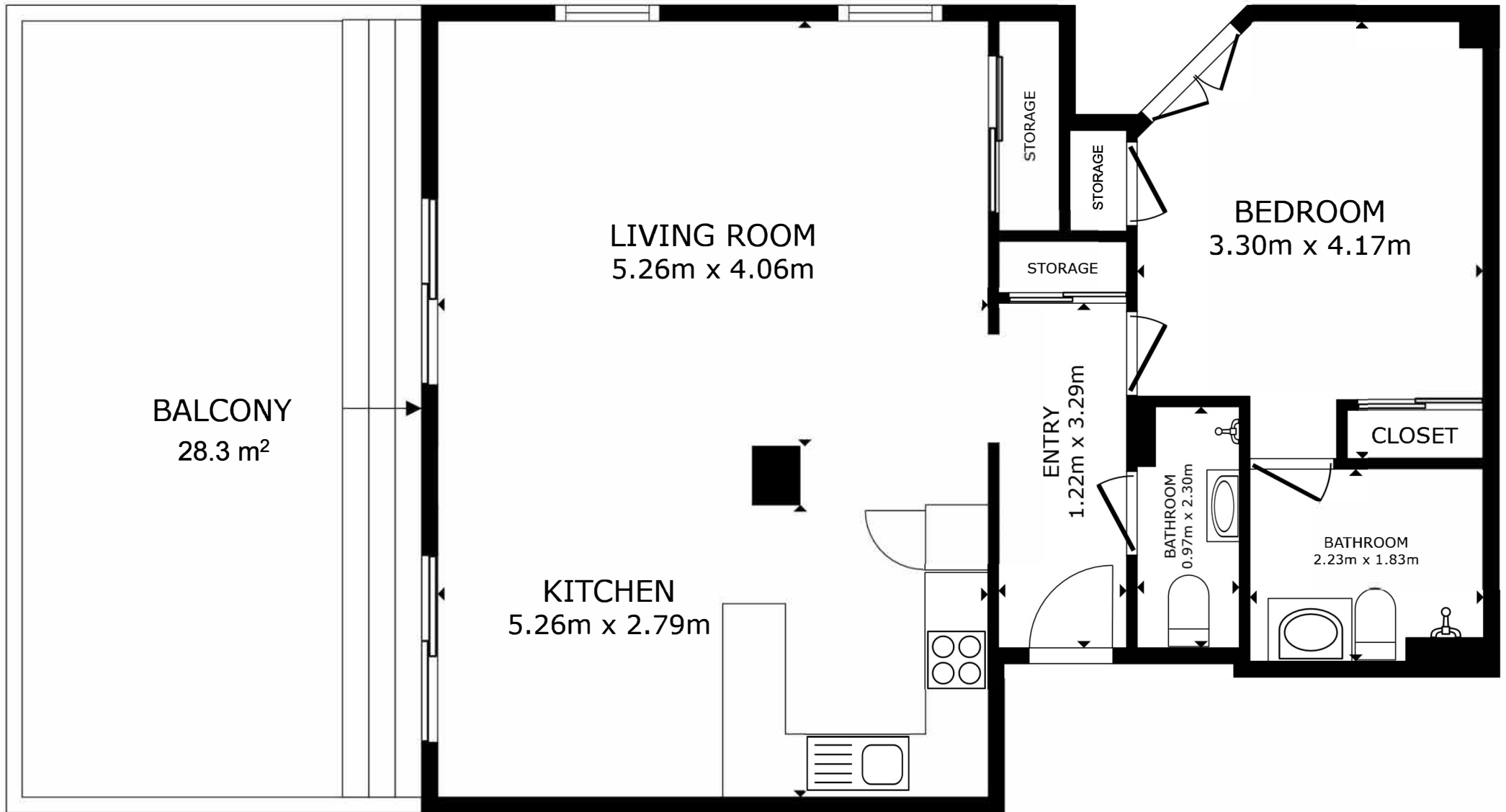


TERRACE-SOLARIUM 227.7 m²



FLOOR PLAN

GROSS INTERNAL AREA
FLOOR PLAN : 73m² (built) / 66.2 m² (useful)
EXCLUDED AREAS : BALCONY 28.3 m²
TOTAL : 73m² (built) / 66.2 m² (useful)
SIZES AND DIMENSIONS ARE APPROXIMATE, ACTUAL MAY VARY.