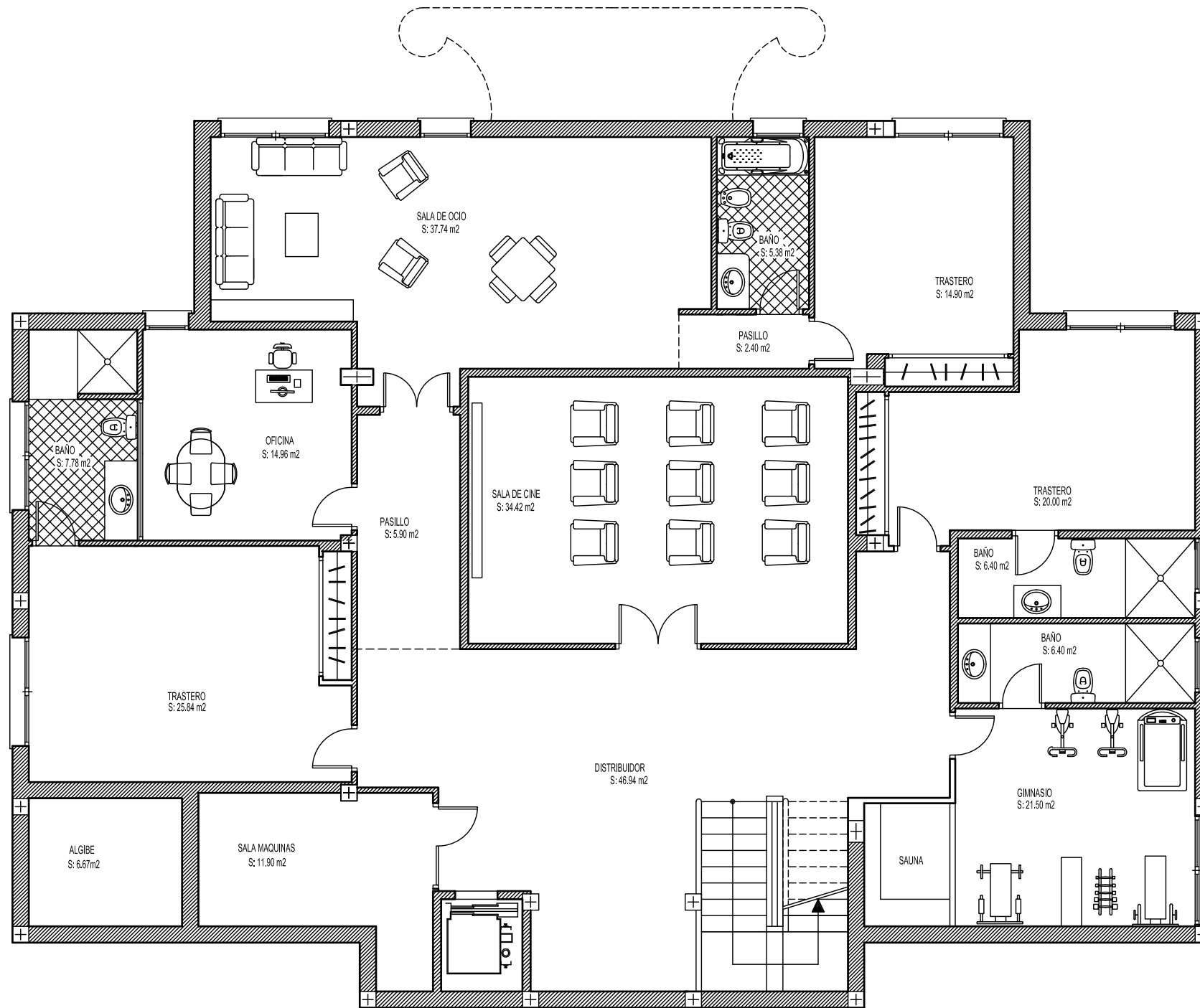


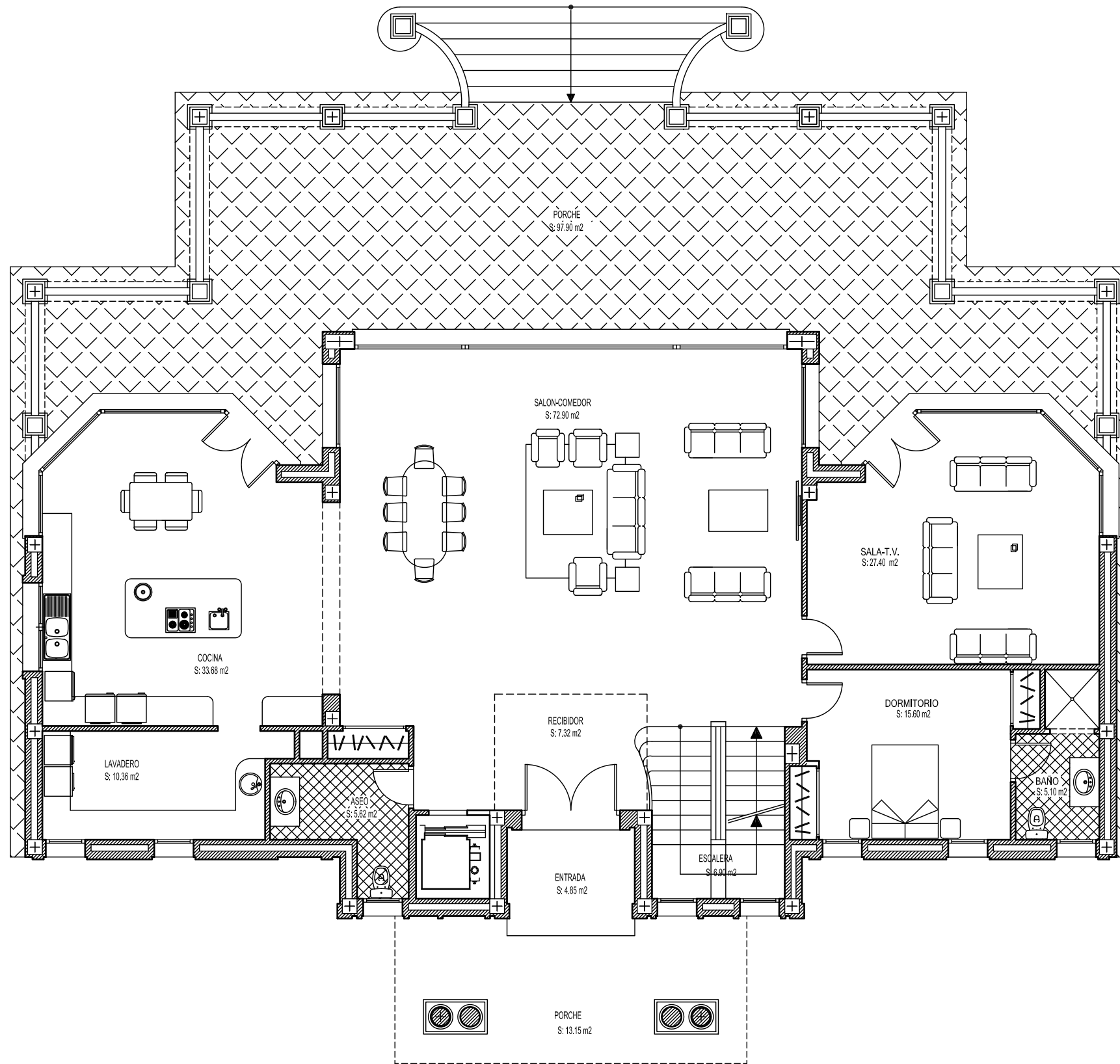
S: 1.492,08 m2



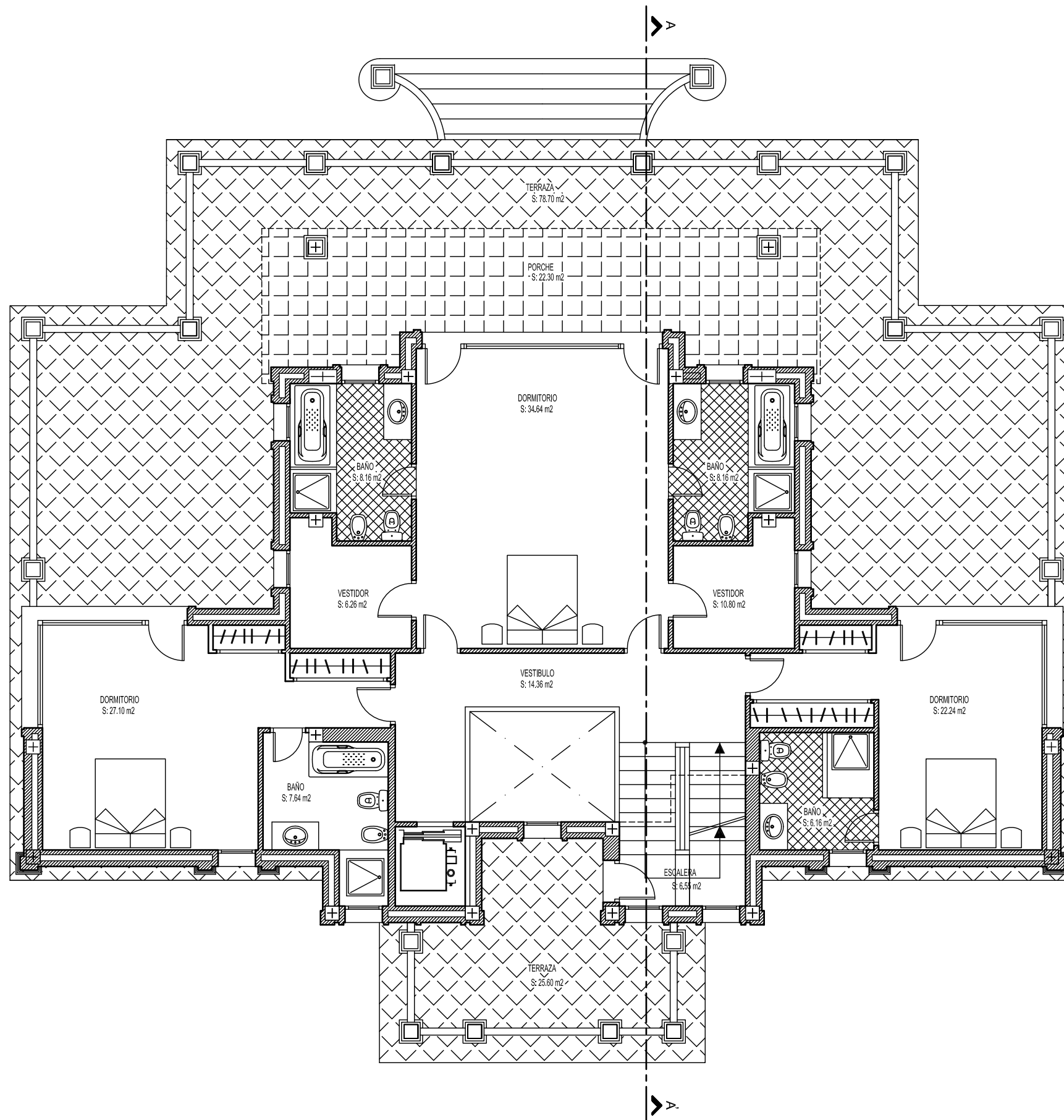
PLANTA SOTANO - BASEMENT FLOOR

1.492,08	SUP.
house	444,20
porch	154,10
basement	323,97

PLANTA BAJA - GROUND FLOOR



PRIMERA PLANTA - FIRST FLOOR



SOLARIUM (AZOTEA) - ROOFTOP SOLARIUM

