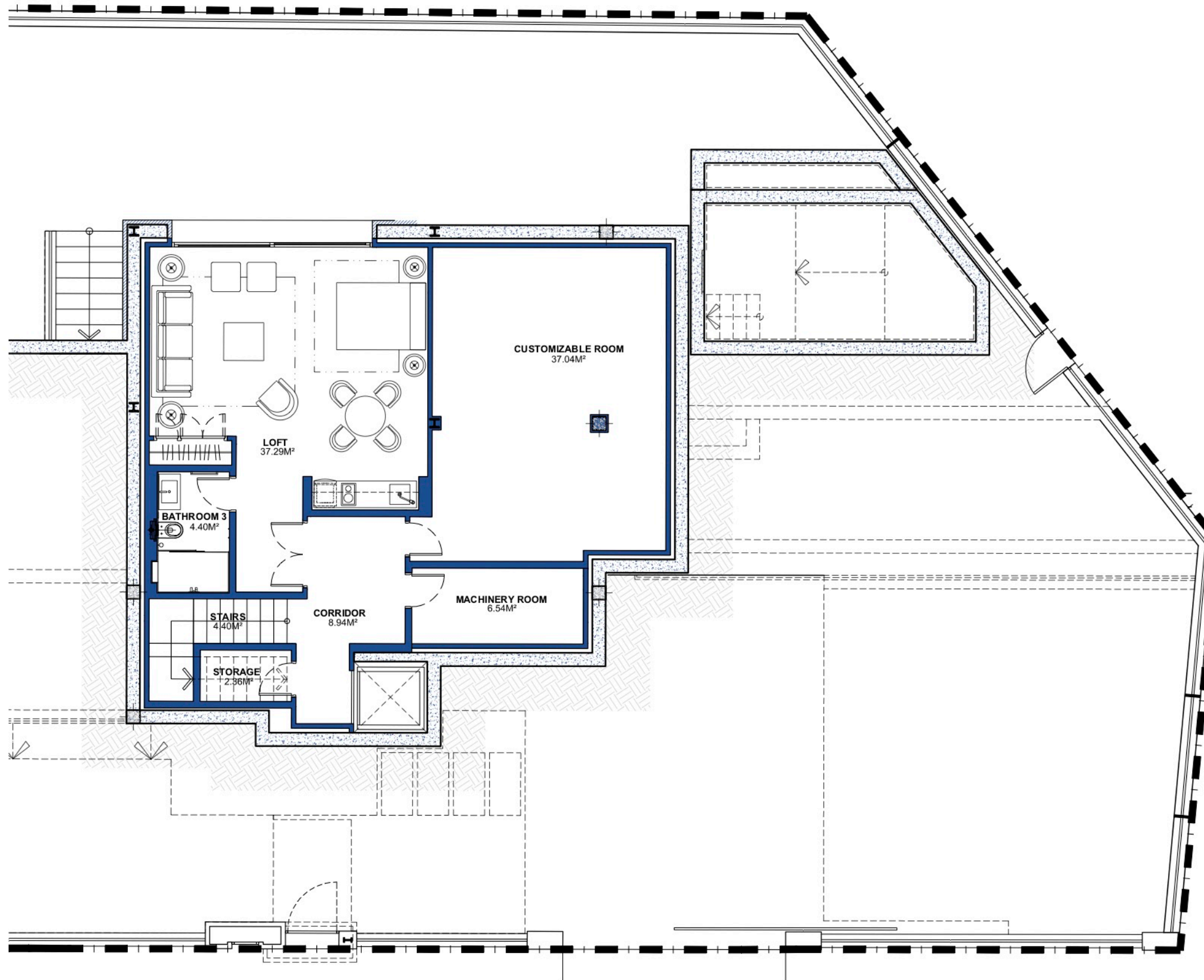
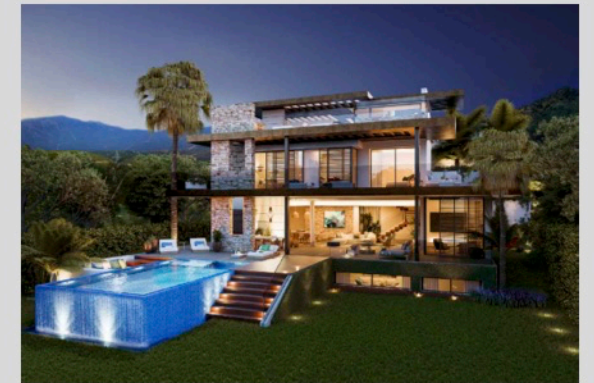


# VILLA 1

## PLANTA SÓTANO



### VILLA 01 Basement

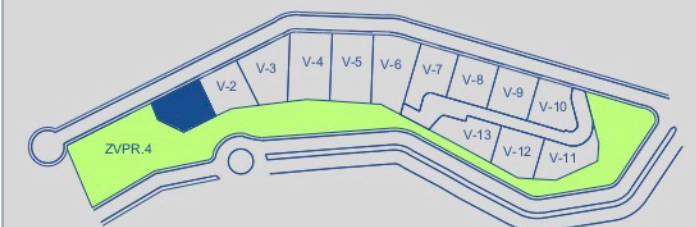


**BUILT AREA** 133,01 M<sup>2</sup>

**APPROXIMATE USEFUL AREAS** M<sup>2</sup>

Loft	37,29
Customizable Room	37,04
Bathroom 3	4,40
Other Areas	22,24
<b>Total</b>	<b>100,97</b>

### SITE PLAN



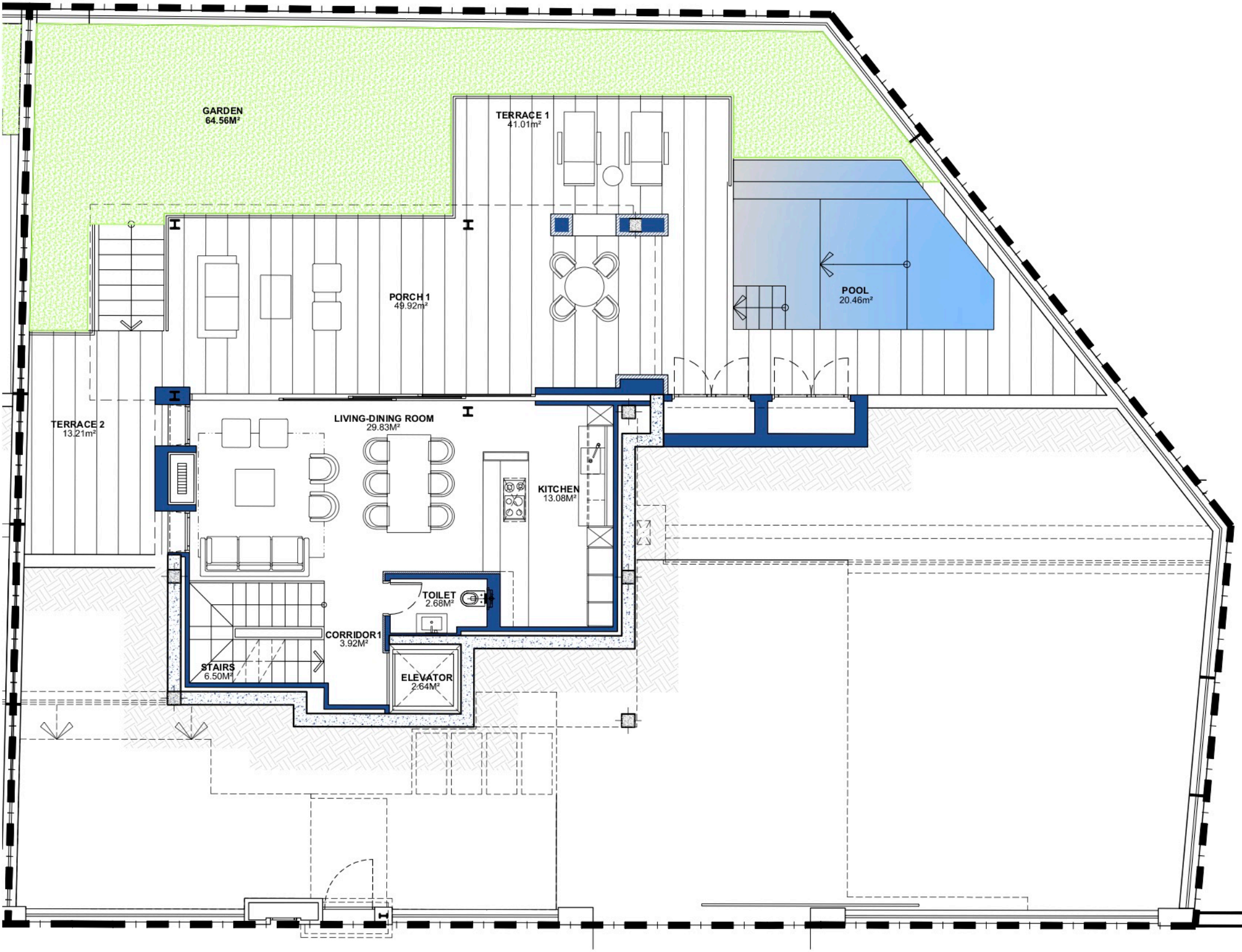
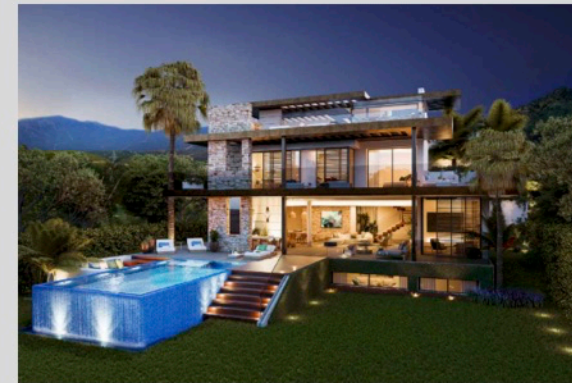
SCALE BAR  
0 0.5 1 2 3M

These images are not contractual but only for illustrative purposes. The images are subject to technical, legal or commercial modifications approved by the project management or the competent authority. The 3D images corresponding to the façades, common elements, and the rest of the spaces are merely indicative and will be subject to verification or modification in the technical projects. The furniture of the 3D images is not included and the equipment of the villas will be indicated in the corresponding building and quality specifications. The energy certification corresponds with the one established in the project in process. All the information and documentation will be provided according to the terms established in the Royal Decree 515/1989 and in the rest of the autonomous or state regulations currently in force that could complement the mentioned decree.

# VILLA 1

## PLANTA BAJA

### VILLA 01 Ground Floor

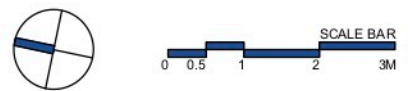
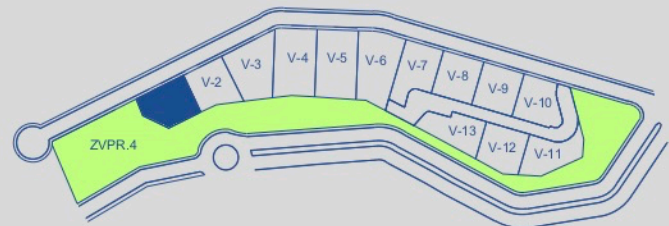


**BUILT AREA** 184,74 M<sup>2</sup>

**APPROXIMATE USEFUL AREAS** M<sup>2</sup>

Living-Dining Room	29,83
Kitchen	13,08
Toilet	2,68
Other Areas	12,76
Porches and Terraces	104,14
<b>Total</b>	<b>162,79</b>
Pool	20,46
Garden	64,56
<b>Total</b>	<b>247,81</b>

### SITE PLAN



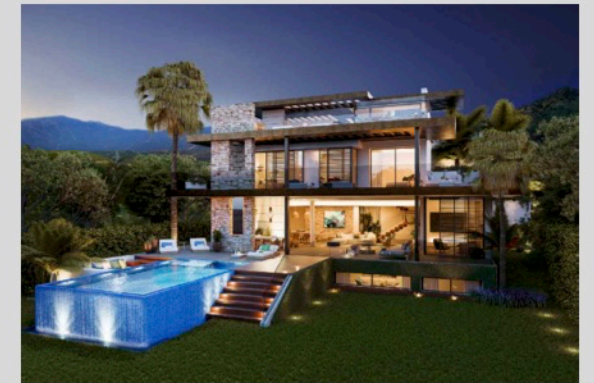
These images are not contractual but only for illustrative purposes. The images are subject to technical, legal or commercial modifications approved by the project management or the competent authority. The 3D images corresponding to the façades, common elements, and the rest of the spaces are merely indicative and will be subject to verification or modification in the technical projects. The furniture of the 3D images is not included and the equipment of the villas will be indicated in the corresponding building and quality specifications. The energy certification corresponds with the one established in the project in process. All the information and documentation will be provided according to the terms established in the Royal Decree 515/1989 and in the rest of the autonomous or state regulations currently in force that could complement the mentioned decree.

# VILLA 1

## PRIMERA PLANTA



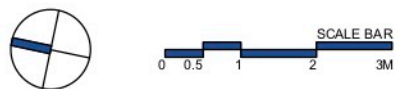
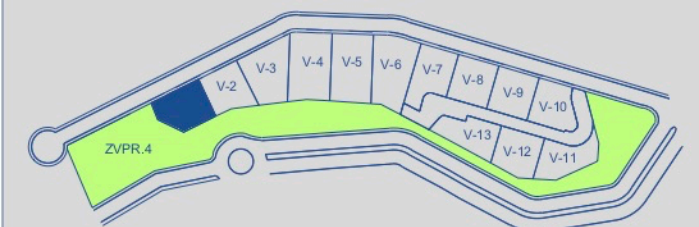
### VILLA 01 First Floor



**BUILT AREA** 138,06 M<sup>2</sup>

APPROXIMATE USEFUL AREAS	M <sup>2</sup>
Bedroom 1	19,55
Bedroom 2	11,88
Bedroom 3	11,55
Bathroom 1	8,02
Bathroom 2	3,48
Other Areas	17,22
Porches and Terraces	37,88
<b>Total</b>	<b>109.58</b>

### SITE PLAN

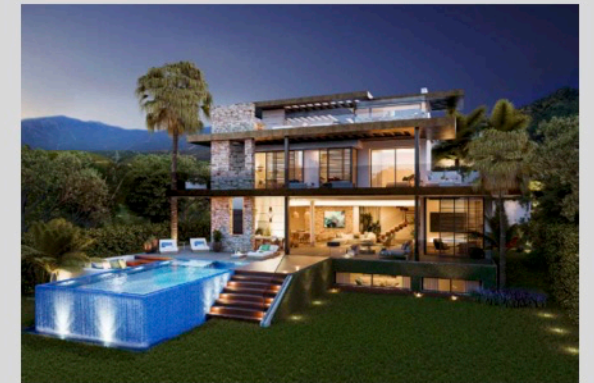


These images are not contractual but only for illustrative purposes. The images are subject to technical, legal or commercial modifications approved by the project management or the competent authority. The 3D images corresponding to the façades, common elements, and the rest of the spaces are merely indicative and will be subject to verification or modification in the technical projects. The furniture of the 3D images is not included and the equipment of the villas will be indicated in the corresponding building and quality specifications. The energy certification corresponds with the one established in the project in process. All the information and documentation will be provided according to the terms established in the Royal Decree 515/1989 and in the rest of the autonomous or state regulations currently in force that could complement the mentioned decree.

# VILLA 1

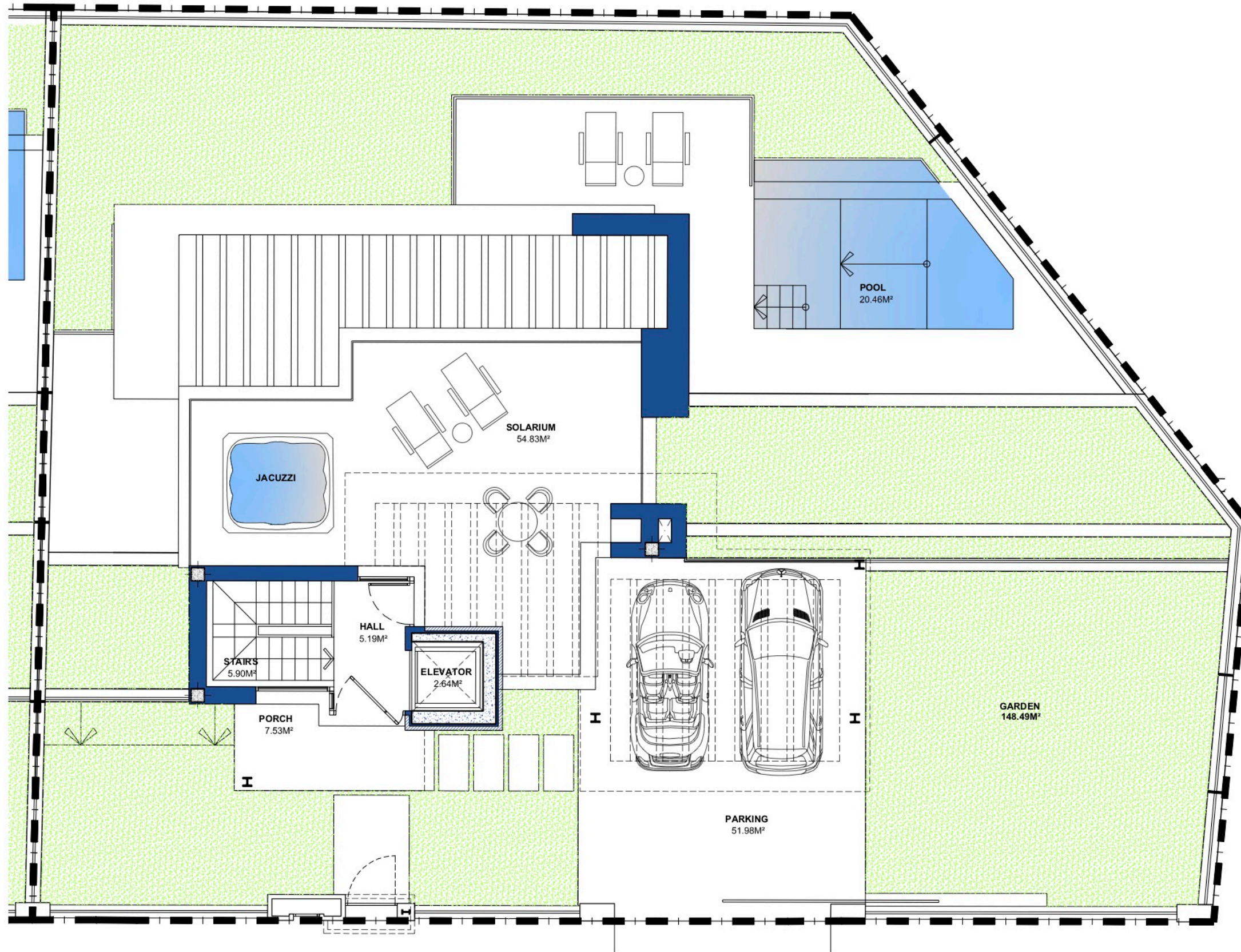
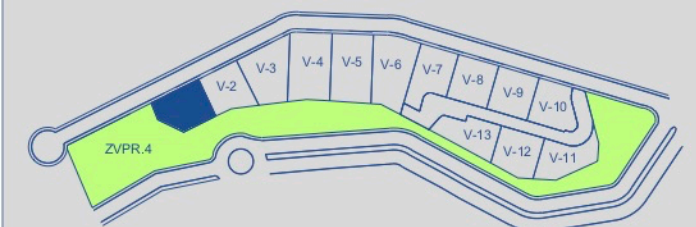
## SOLARIUM

### VILLA 01 Solarium



<b>BUILT AREA</b>	<b>92,80 M<sup>2</sup></b>
<b>APPROXIMATE USEFUL AREAS</b>	<b>M<sup>2</sup></b>
Hall	5,19
Other Areas	8,54
Porches and Terraces	62,36
Parking	51,98
Garden	148,49
<b>Total</b>	<b>276,56</b>

### SITE PLAN



These images are not contractual but only for illustrative purposes. The images are subject to technical, legal or commercial modifications approved by the project management or the competent authority. The 3D images corresponding to the façades, common elements, and the rest of the spaces are merely indicative and will be subject to verification or modification in the technical projects. The furniture of the 3D images is not included and the equipment of the villas will be indicated in the corresponding building and quality specifications. The energy certification corresponds with the one established in the project in process. All the information and documentation will be provided according to the terms established in the Royal Decree 515/1989 and in the rest of the autonomous or state regulations currently in force that could complement the mentioned decree.