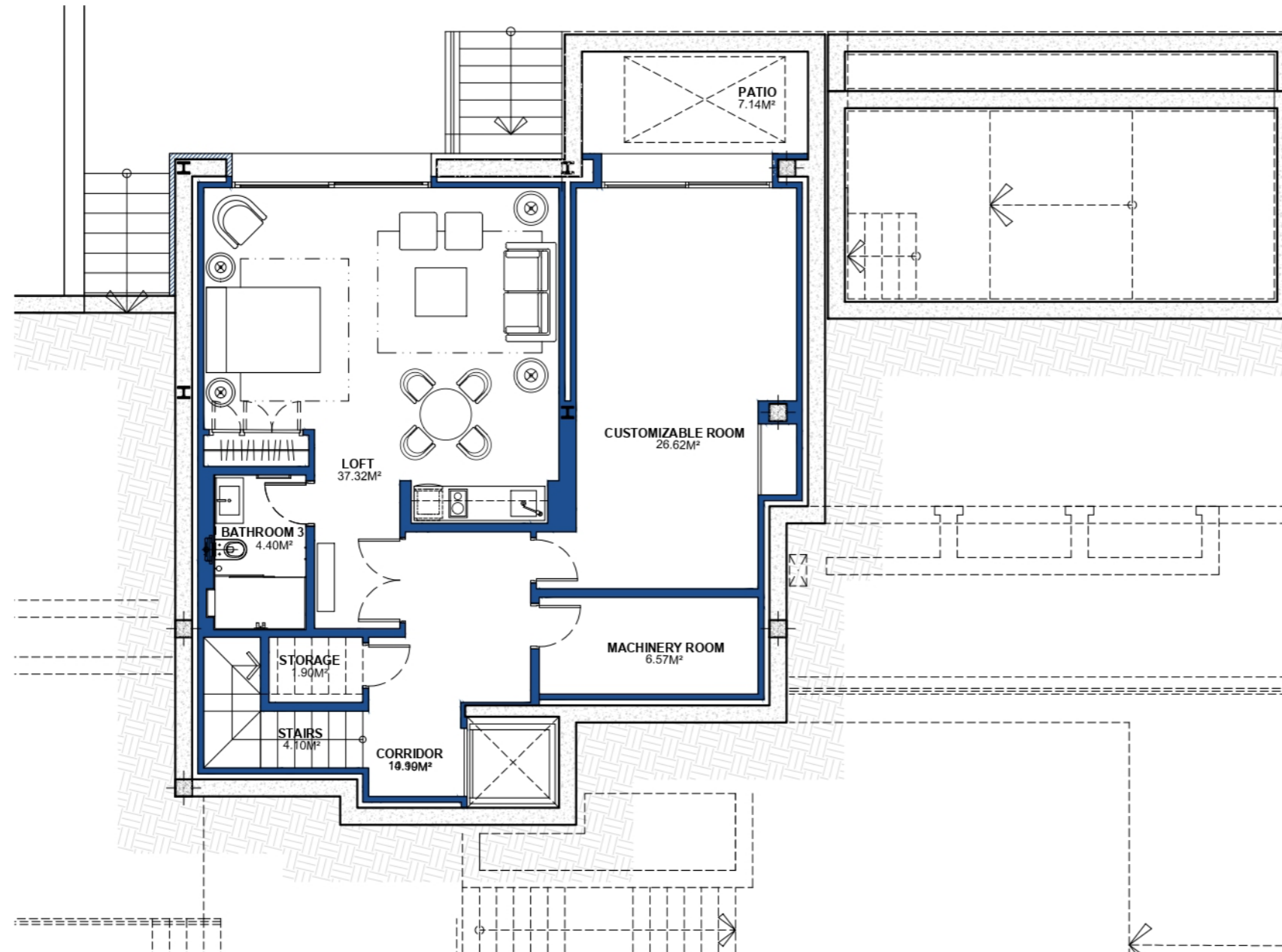


# VILLA 12

## PLANTA SÓTANO

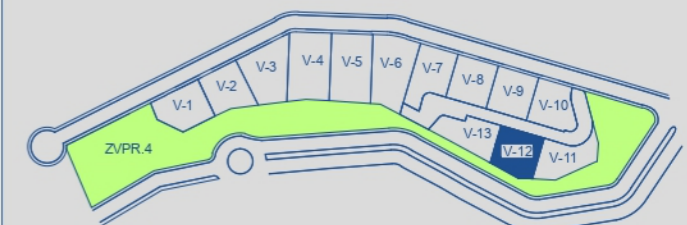


### VILLA 12 Basement



<b>BUILT AREA</b>	<b>132,98 M<sup>2</sup></b>
<b>APPROXIMATE USEFUL AREAS</b>	<b>M<sup>2</sup></b>
Loft	37,32
Customizable Room	26,62
Bathroom 3	4,40
Other Areas	22,76
<b>Total</b>	<b>91,10</b>

### SITE PLAN



These images are not contractual but only for illustrative purposes. The images are subject to technical, legal or commercial modifications approved by the project management or the competent authority. The 3D images corresponding to the façades, common elements, and the rest of the spaces are merely indicative and will be subject to verification or modification in the technical projects. The furniture of the 3D images is not included and the equipment of the villas will be indicated in the corresponding building and quality specifications. The energy certification corresponds with the one established in the project in process. All the information and documentation will be provided according to the terms established in the Royal Decree 515/1989 and in the rest of the autonomous or state regulations currently in force that could complement the mentioned decree.

# VILLA 12

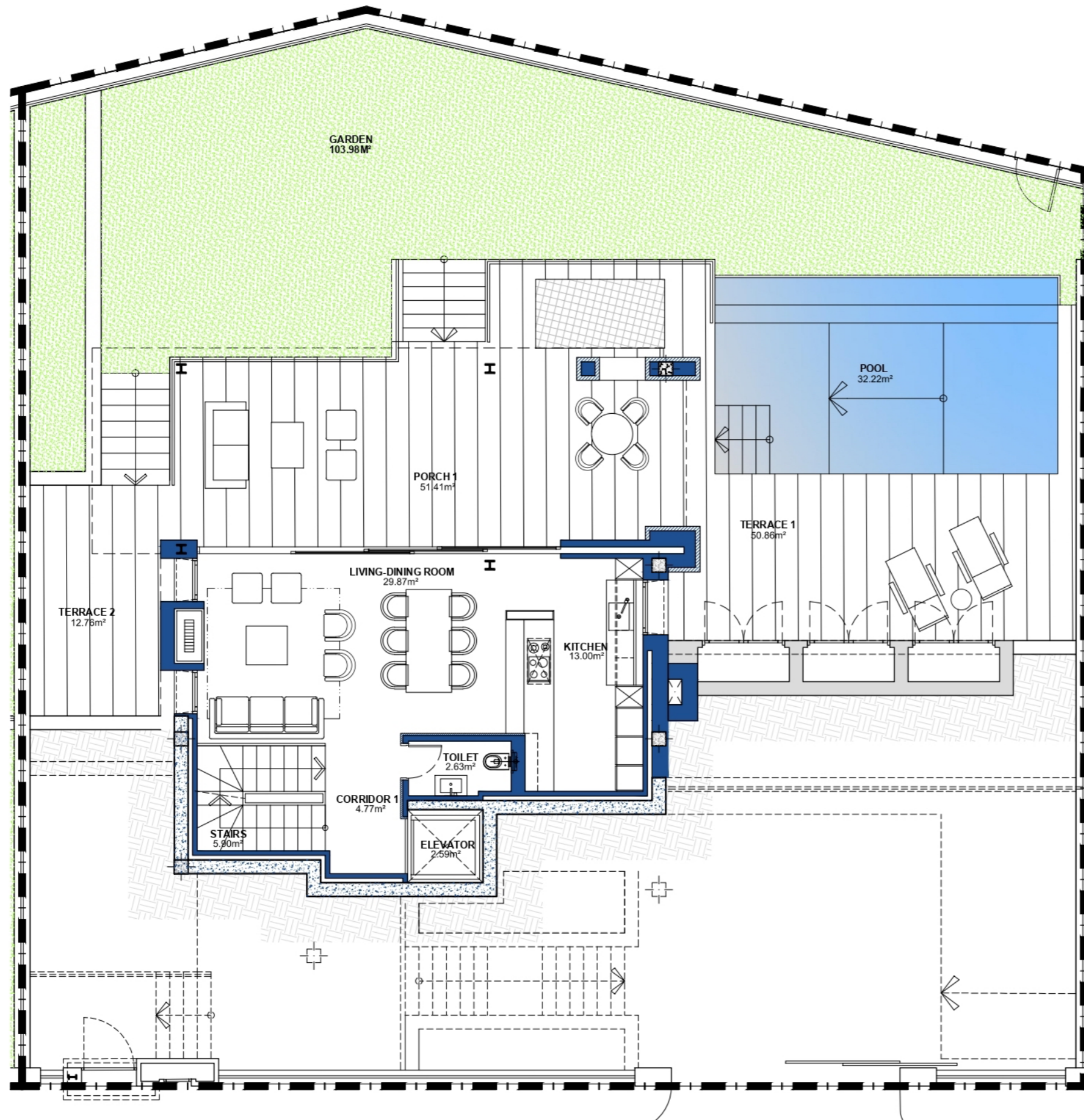
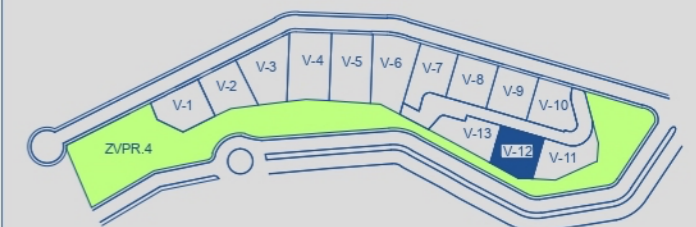
## PLANTA BAJA

### VILLA 12 Ground Floor



BUILT AREA	196,83 M <sup>2</sup>
APPROXIMATE USEFUL AREAS	M <sup>2</sup>
Living-Dining Room	29,87
Kitchen	13,00
Toilet	2,63
Other Areas	13,26
Porches and Terraces	105,08
<hr/>	
Pool	32,22
Garden	103,98
<b>Total</b>	<b>300,04</b>

### SITE PLAN



These images are not contractual but only for illustrative purposes. The images are subject to technical, legal or commercial modifications approved by the project management or the competent authority. The 3D images corresponding to the façades, common elements, and the rest of the spaces are merely indicative and will be subject to verification or modification in the technical projects. The furniture of the 3D images is not included and the equipment of the villas will be indicated in the corresponding building and quality specifications. The energy certification corresponds with the one established in the project in process. All the information and documentation will be provided according to the terms established in the Royal Decree 515/1989 and in the rest of the autonomous or state regulations currently in force that could complement the mentioned decree.

# VILLA 12

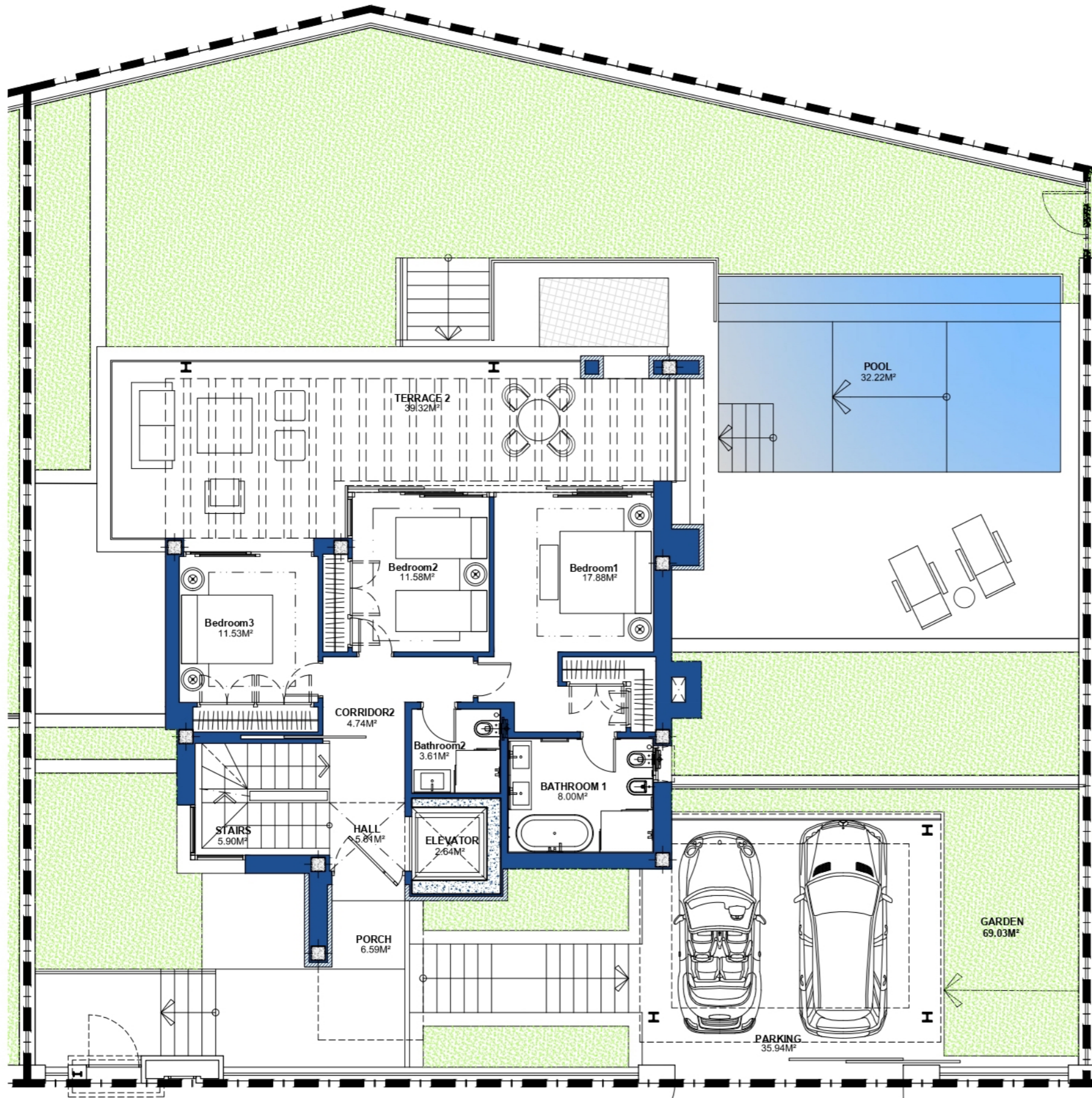
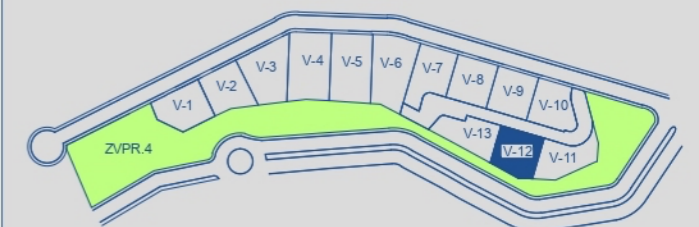
## PRIMERA PLANTA

### VILLA 12 First Floor



<b>BUILT AREA</b>	<b>146,33 M<sup>2</sup></b>
<b>APPROXIMATE USEFUL AREAS M<sup>2</sup></b>	
Bedroom 1	17,88
Bedroom 2	11,58
Bedroom 3	11,53
Bathroom 1	8,00
Bathroom 2	3,61
Other Areas	18,84
Porches and Terraces	45,91
<b>Total</b>	<b>117,35</b>
Parking	35,94
Garden	69,03
<b>Total</b>	<b>222,32</b>

### SITE PLAN

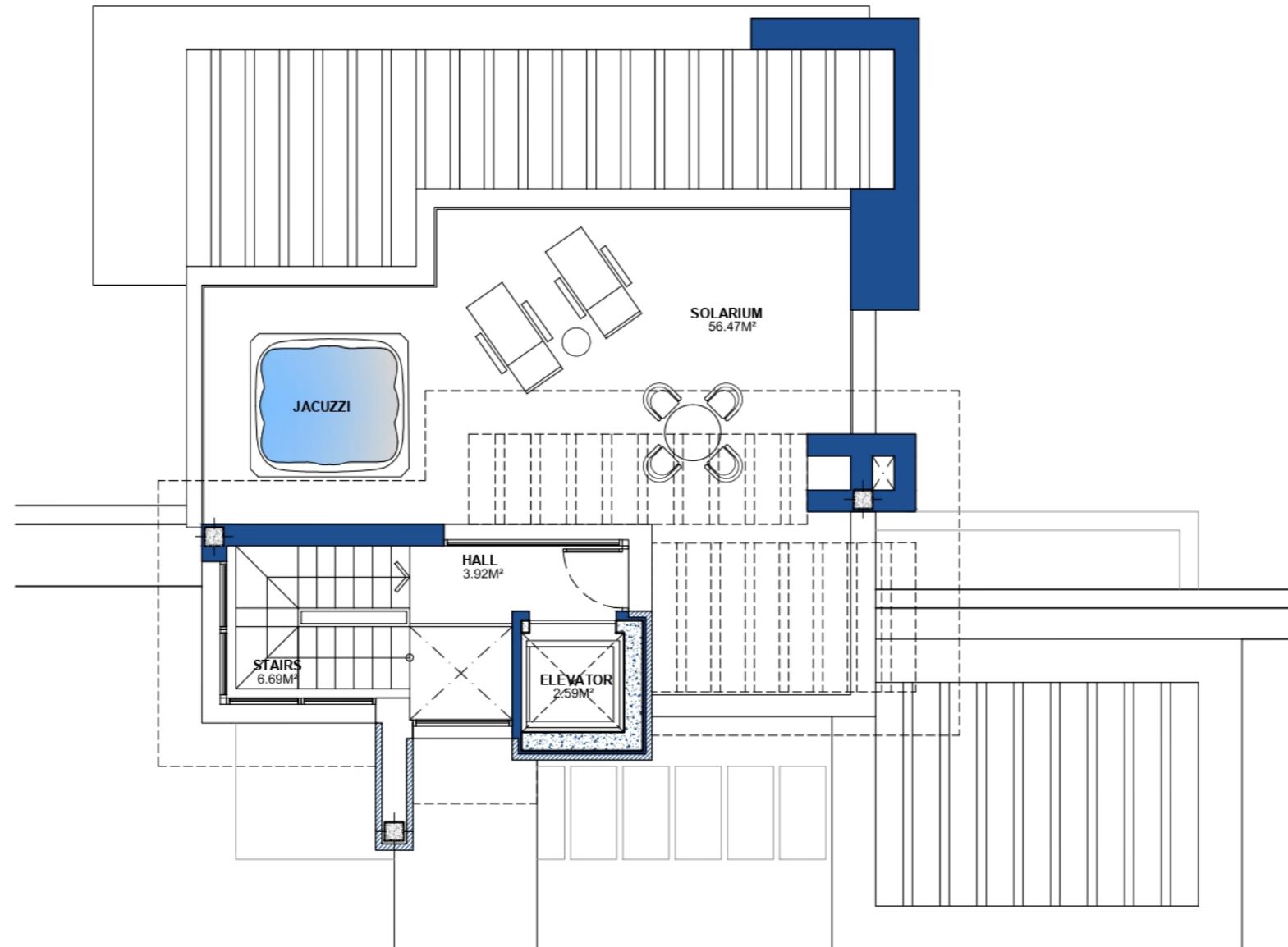


These images are not contractual but only for illustrative purposes. The images are subject to technical, legal or commercial modifications approved by the project management or the competent authority. The 3D images corresponding to the façades, common elements and the rest of the spaces are merely indicative and will be subject to verification or modification in the technical projects. The furniture of the 3D images is not included and the equipment of the villas will be indicated in the corresponding building and quality specifications. The energy certification corresponds with the one established in the project in process. All the information and documentation will be provided according to the terms established in the Royal Decree 515/1989 and in the rest of the autonomous or state regulations currently in force that could complement the mentioned decree.

# VILLA 12

## SOLARIUM

### VILLA 12 Solarium

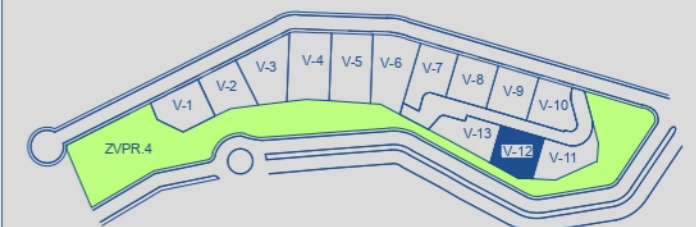


**BUILT AREA** 92,45 M<sup>2</sup>

**APPROXIMATE USEFUL AREAS** M<sup>2</sup>

Hall	3,92
Other Areas	9,28
Porches and Terraces	56,47
<b>Total</b>	<b>69,67</b>

### SITE PLAN



These images are not contractual but only for illustrative purposes. The images are subject to technical, legal or commercial modifications approved by the project management or the competent authority. The 3D images corresponding to the façades, common elements, and the rest of the spaces are merely indicative and will be subject to verification or modification in the technical projects. The furniture of the 3D images is not included and the equipment of the villas will be indicated in the corresponding building and quality specifications. The energy certification corresponds with the one established in the project in process.

All the information and documentation will be provided according to the terms established in the Royal Decree 515/1989 and in the rest of the autonomous or state regulations currently in force that could complement the mentioned decree.